

40 Channel 24 Vdc Digital Input FTA (T8800)

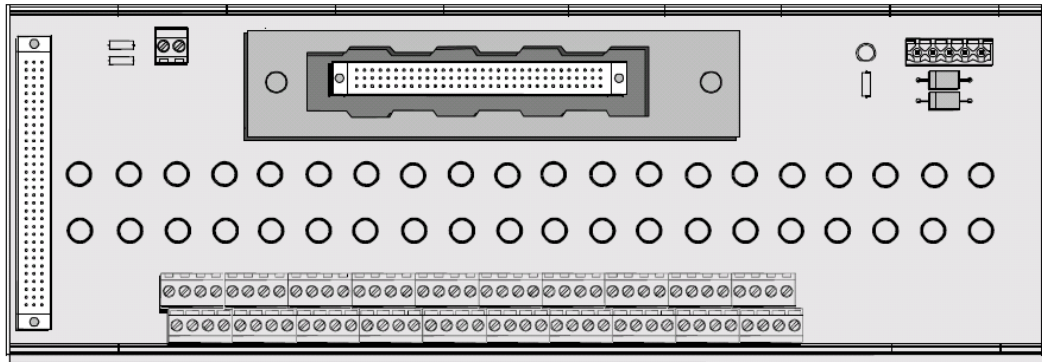


Figure 4-13: Digital Input FTA

The 24 Vdc digital input FTA, shown in Figure 4-13, is designed to act as the main interface between a field device generating a digital signal and 24 Vdc digital input module T8403.

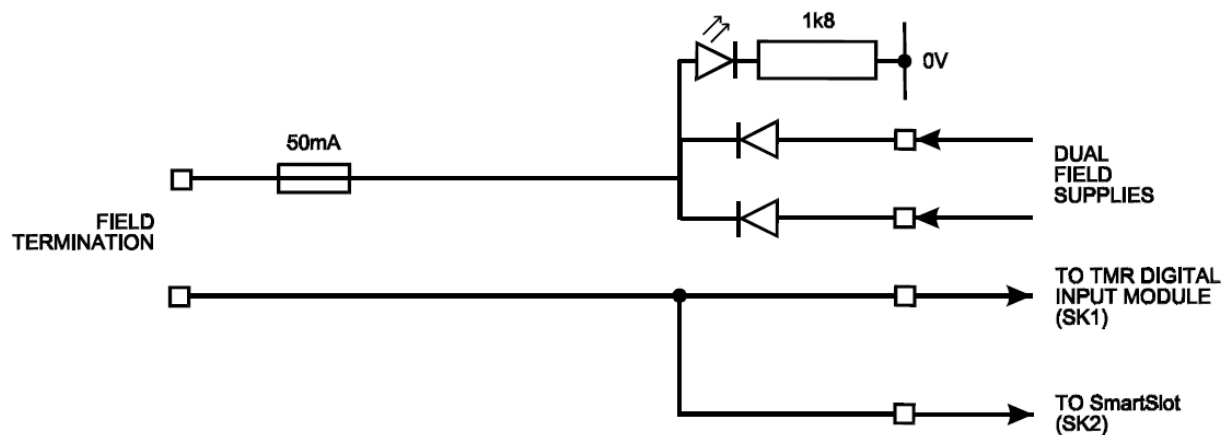


Figure 4-14: Single Channel Schematic for Digital Input FTA

Power for the field is supplied from dual 24 Vdc feeds which are commoned via diodes on the FTA. Indication of power is provided by a green LED.

The supply voltage to the field is fed via the 50mA fuse. This effectively limits the current in the field loop. The incoming signal (digital) from the field device is fed directly to the digital input module. Line monitoring components (if required) provide the necessary thresholds used by the input module to detect the field loop/device status, i.e. open/short circuit, alarm etc.

The cable linking the 40 channels on the input module to the FTA is terminated at the 96-way socket SK1.